

PROVIDENCE, R. I.  
CITY ENGINEER'S OFFICE.  
STREET LINE DEPT.

Aug 24, 1886.

012149.

Providence R.I.  
This plat accompanies  
our report of this date.

# ACADEMY AVENUE

FROM CHALKSTONE AVE. TO ATWELLS AVE.

IN FOUR SHEETS.

SCALE 50 FEET PER INCH.

**ACADEMY AVE.**

**CAMBRIDGE ST.**

**NEWARK ST.**

**ATWELLS AVENUE**

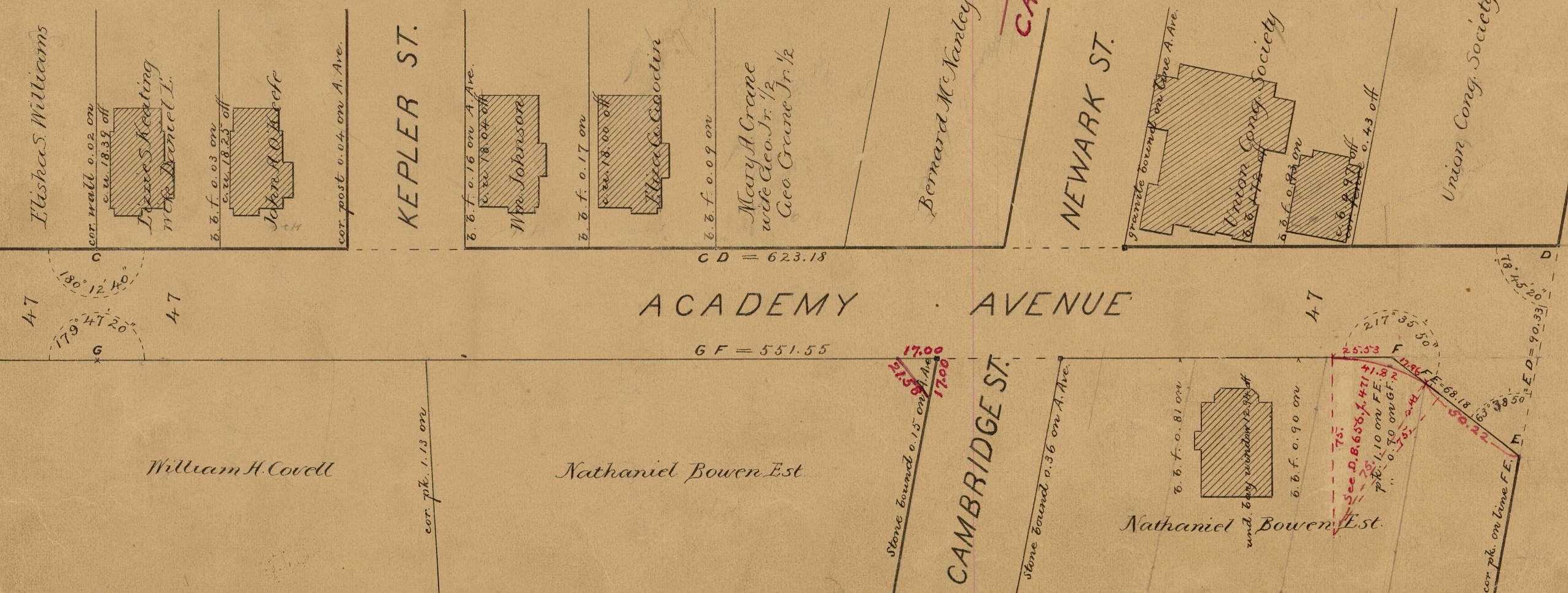
**KEPLER ST.**

**CAMBRIDGE ST.**

ACADEMY AVENUE

Triangular parcel indicated by  
the letters ABC Declared a  
public highway March 20, 1930.

Note Between the points F and E the  
width is made greater than 47 feet to  
conform to the curbstones as set and  
also with the general lines of occupation.



CD = 623.18

GF = 551.55

25.53

41.82

110 on GF

0.70 on GF

0.44

75

See D. B. 656, p. 471

110 on FE

0.70 on GF

0.44

83  
A-20

OFFICE No.

CRAWER

83  
A-20

83  
A-20